

# Merino Solar Farm

## FACT SHEET

EDP Renewables (EDPR) Australia is proposing to construct and operate a utility-scale Solar Farm and Battery Energy Storage System (BESS) in the localities of Tirrannaville and Gundry NSW, located 6 km south of Goulburn, to the east of Braidwood Road.

The development would connect renewable solar energy to the existing Transgrid high voltage powerline that transects the site. It would also assist the national electricity grid at times of peak demand and in times of emergency with additional energy storage.

The project is expected to provide 450MW of solar capacity and a BESS capacity of 450MW/1800MWh.

The BESS capacity has been increased from the original 300MW outlined in the Scoping Report.

### EDP Renewables Australia

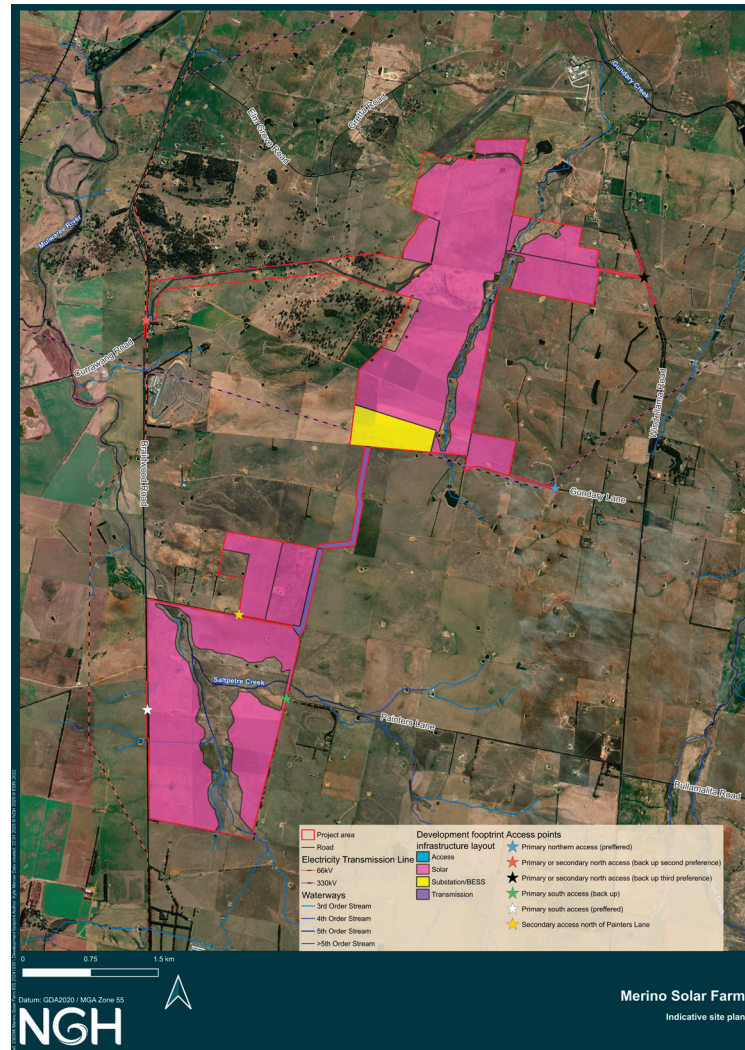
In December 2023, EDPR Australia acquired ITP Development, and the company became EDPR Australia, a part of EDP Renewables APAC, a leading clean energy hub for the region.

EDPR Australia develops utility and town-scale solar farms in Australia and undertakes solar farm landholder engagement, system design, planning approvals, financing, electrical connection approvals and commissioning.

EDPR Australia maintains relationships with multiple stakeholders such as communities, governments and contractors to ensure successful project delivery. We hold a broad portfolio of solar projects in the New South Wales region and are moving towards battery storage development.

### The Project

The Merino Solar Farm project will utilise the latest technology in the sector, complying with all safety and hazard parameters that are highly regulated by the Australian Government.



Construction and operation of the project would involve the following key components:

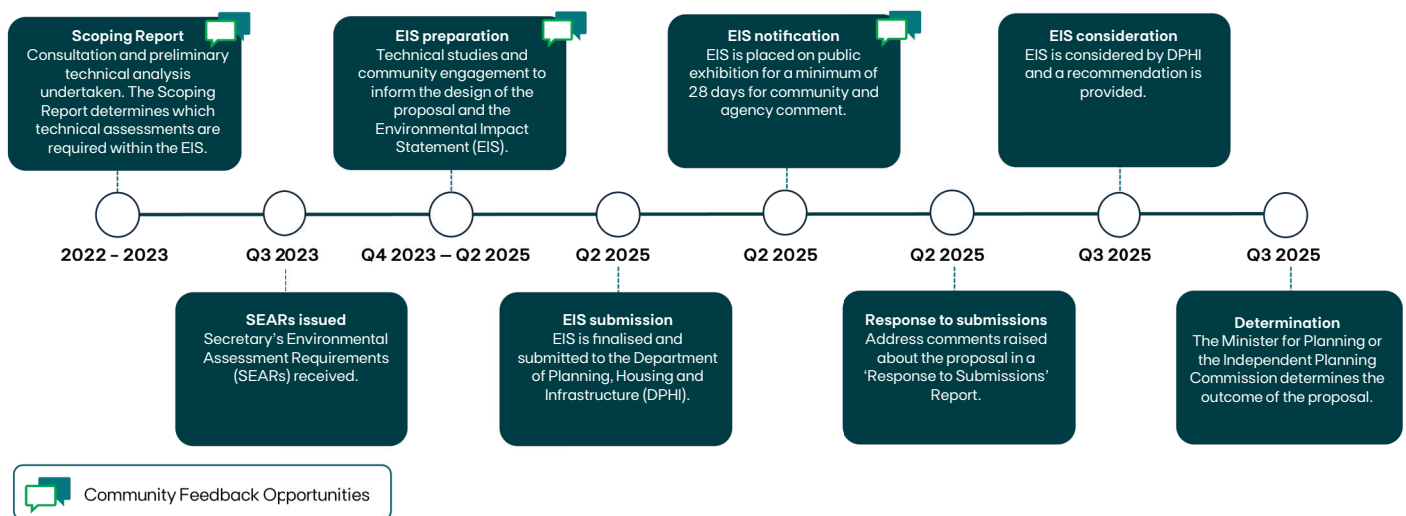
- 450 MW Solar Farm including:
  - 450 MW/1800MWh (4 operational hours) BESS
  - An onsite substation connecting the BESS to the existing 330kV Transgrid transmission line
  - Associated infrastructure including transformers and inverters
  - Operations and maintenance (O&M) buildings, offices, staff amenities
- Switchyard
- Parking, site office and amenities for operational use.

# Merino Solar Farm

## Project Update

In late 2022, ITP began engaging with the community and stakeholders to complete a Scoping Report for an NSW State Significant Development (SSD) application, which was submitted to the NSW Department of Planning, Housing, and Infrastructure (DPHI) in June 2023. ITP received the Secretary's Environmental Assessment Requirements on 14 July 2023. The SEARs outline the necessary information to be included in an Environmental Impact Statement (EIS), which EDPR Australia are now preparing.

The EIS will fully assess the proposed Solar Farm and BESS, considering community input and specialist reports on visual impact, noise, biodiversity, heritage, traffic, transport, social impact and more. EDPR Australia plans to submit the EIS to DPHI Q2 2025. After submission, the EIS will be publicly exhibited for a minimum of 28 days for feedback and response. EDPR Australia will address community and stakeholder concerns in a Submissions Report, after which DPHI will decide whether or not to approve the project.



## The Benefits

### Increases clean energy production and storage

The Solar Farm will provide renewable energy directly into the electricity network with the sites pre-existing high voltage power lines. The BESS will improve the stability and reliability of the electricity network by storing energy during periods of low demand, and dispatching energy during periods of peak demand and emergency events.

### Create jobs

The project will create jobs in regional NSW. Estimated job numbers are approximately 200-300 full-time equivalent (FTE) during the peak construction phase and 50 casual staff and 4 full-time staff during operation.

### Income for local area

The project will diversify income and increase revenue to ancillary services such as food and accommodation to the local area.


## Merino Solar Farm Site


The development footprint will be approximately 760 hectares. Its location has good solar resources, good access to transmission infrastructure with suitable road access for construction and is in close proximity to the Goulburn local workforce.

## Questions and Feedback


Engaging with the local community is essential to us. EDPR Australia seeks to ensure that neighbours, stakeholders and the wider community have access to information regarding the Project and how it may affect you so that you can participate in the Proposal and help to shape it.

For more information, project updates and to provide feedback, please contact us:

 [merino@edpr.com](mailto:merino@edpr.com)

 1300 551 715

 [www.edpr.com/apac/merino-solar-farm](http://www.edpr.com/apac/merino-solar-farm)

 Complete the feedback survey by scanning the QR code

